



Mobilith SHC PM Series Supreme-performance synthetic greases for paper machinery



Engineered for the harsh operating environments of paper machine bearing applications. Mobilith SHC PM Series is designed specifically for severe paper machine applications where high-temperature environments and exposure to different qualities of water are prevalent. It combines the unique features of a synthetic basefluid with that of a high-quality lithium-complex thickener, contributing to excellent adhesion, wear protection, and resistance to water — helping your operation maximize production and minimize downtime.

Excellent high-temperature oxidation stability, essential for cost-effective operations. Scientifically formulated for paper machine bearing applications, Mobilith SHC PM Series greases help maximize relubrication intervals and bearing life in high-temperature felt-roll and calender-stack bearings up to 150°C (302°F), resulting in optimum machine life and lower

maintenance costs — and increased machine availability. What's more, they've been developed to help you lower the bearing operating temperature, resulting in longer grease life.

Long grease life is just the beginning. Mobilith SHC PM Series' wear protection and water tolerance help provide maximum bearing protection under a wide range of conditions. Even in some of the most severe paper machine application conditions such as high temperatures or exposure to process water, Mobilith SHC PM Series protects bearings and prolongs relubrication intervals.

A balanced approach to performance. Mobilith SHC PM Series is based on evaluation in a comprehensive suite of industry, equipment manufacturer, and proprietary internal tests. This overall approach is designed to ensure a well-balanced formulation that delivers benefits and meets the needs of paper machinery and its operators. That's why Mobilith SHC PM Series is recognized by equipment builders worldwide for innovation and outstanding technical performance in critical paper machinery.

High-Performance Benefits

Exceptional resistance to water washout and sprayoff

Very good water tolerance helps maintain grease consistency and lubrication tenacity that can result in reduced bearing failures.

Enhanced protection against rust and corrosion

Even in harsh wet-end process water environments, Mobilith SHC PM Series reliably protects bearings from corrosion and wear, helping reduce downtime and maintenance costs.

Excellent high-temperature oxidation stability

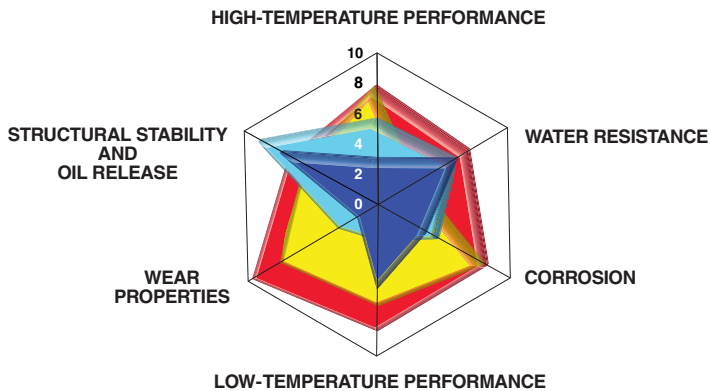
Enables advanced dry-end bearing protection at temperatures up to 150°C (302°F).

Outstanding dispensability

Good pumpability over a wide range of conditions, providing excellent performance in grease distribution systems.

Mobilith SHC PM Series — Performance

Balanced Performance



■ MOBILITH SHC PM 460 ■ COMPETITOR A ■ COMPETITOR B ■ COMPETITOR C

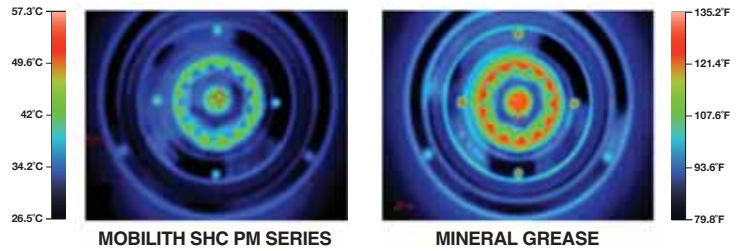
Mobilith SHC PM Series is formulated to help provide overall performance with improved equipment reliability and increased uptime. Compared with competitive products, Mobilith SHC PM Series delivers exceptional water resistance, wear and corrosion protection, and stability across wide operating conditions and temperature ranges.

Resistance to Water Washout



In water washout testing (ASTM D 12264), Mobilith SHC PM Series delivers outstanding protection, with significantly less grease loss compared to competitive products. Effective water washout resistance can translate to extended equipment component life through rust and corrosion protection.

Temperature and Friction Control



As illustrated in the thermal images above, Mobilith SHC PM Series exhibits exceptional friction control, resulting in lower bearing temperatures in FE-9 bearing tests compared with mineral oil-based products.

Typical Properties Table

Mobilith SHC	PM 220	PM 460
NLGI Grade	1.5	1.5
Thickener Type	Lithium Complex	Lithium Complex
Color, Visual	Off-White	Off-White
Dropping Point, C, ASTM D 2265	275	275
Viscosity of Oil, ASTM D 445, cSt @ 40°C	220	460
4-Ball Wear, ASTM D 2266, Scar, mm	0.5	0.5
4-Ball Weld Load, ASTM D 2596, kg	250	250
Timken OK Load, ASTM D 2509, lbs	65	65
Water Washout, ASTM D 1264, 79°C, % Loss	2	3
EMCOR Rust Test, ASTM D 6138, Distilled Water, Rating	0/0	0/0
EMCOR Rust Test, ASTM D 6138, Acid Water pH 4.5, Rating	0/0	0/0
EMCOR Rust Test, ASTM D 6138, Alkaline Water pH 12.0, Rating	0/0	0/0
DIN 51825 Classification	KPHC1-2N-40	KPHC1-2N-40

For more information on Mobilith SHC PM Series and other Mobil Industrial Lubricants and services, please contact your local company representative or visit www.mobilindustrial.com.